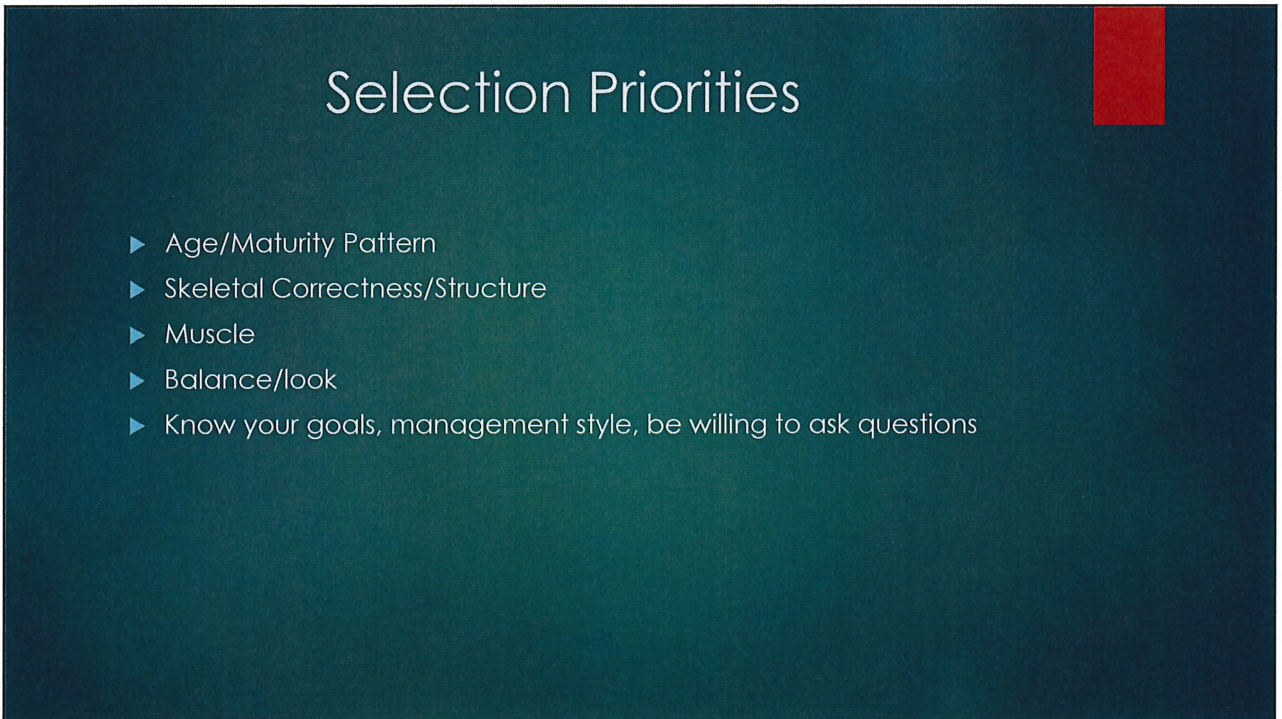


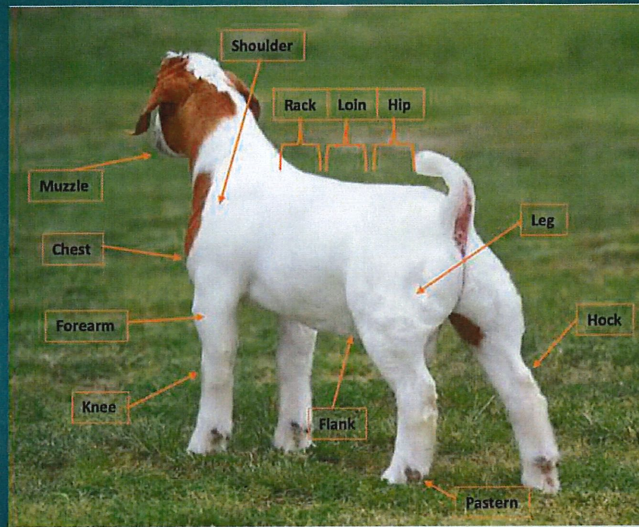


1



2

Terminology



3

Age/Maturity Pattern

- ▶ Know your end point
- ▶ Visit with the breeder, they know their genetics
- ▶ Earlier maturing wethers usually can stay in the lighter weights and will be managed differently
- ▶ Later Maturing wethers you might need to feed longer and harder to hit the correct window.
- ▶ Age: Majority of wethers are currently shown between 6-10 months of age.

4

Skeletal Correctness/Structure

- ▶ Make sure the goats are sound structured so they can mature and develop as you want
- ▶ Becoming a growing issue. You can gain muscle, you can't change large structure flaws



5

Muscle

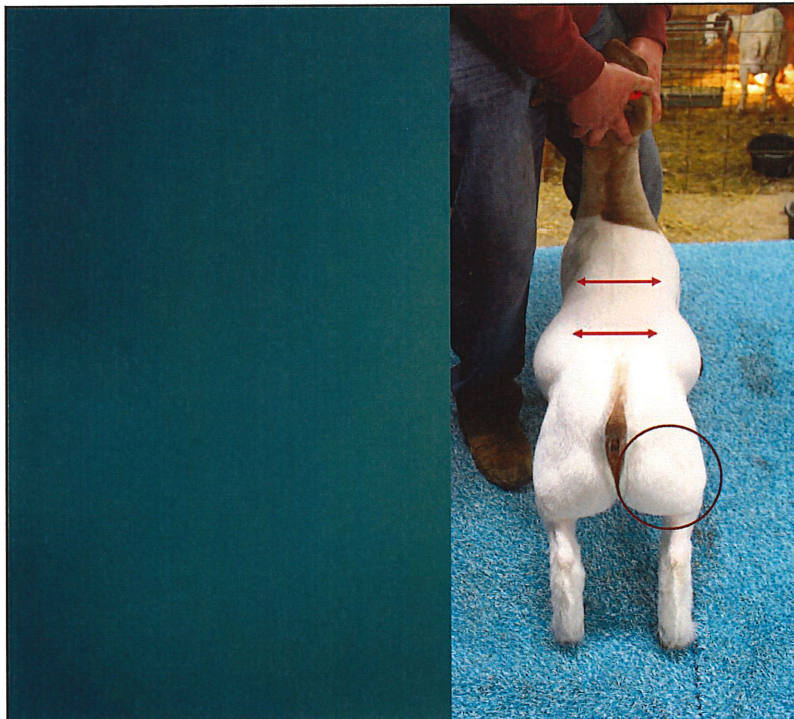
- ▶ One of the most important traits for Market Animals
- ▶ The easiest to see
- ▶ Feed, maturity, weight helps
- ▶ Where do we look?
 - ▶ Younger goats I depend more on skeletal fundamentals; chest, base width, body shape

6

Muscle



7



8

Balance, Quality

- ▶ When it all comes together
- ▶ Level, correct structured, proportional



9

Next Steps...

- ▶ Build a relationship with a breeder
- ▶ Vaccinations
- ▶ What type of feed?
 - ▶ Fresh, something they will eat
 - ▶ Early on I prefer plain feed and get consumption high
- ▶ Deworm, treat for coccidiosis, external parasites
- ▶ Facilities

10